

AS Fine Art Induction Task

Task 1: Enforced Creativity

Artists frequently impose restrictions on themselves in order to explore their creativity and push their artistic practice. In this task you will produce a series of drawings, but will be restricted by the material you will work on. Your task is to:

- ⇒ Produce 12x observational drawings on a combination of 2D and 3D **found objects**—you must not use traditional drawing paper, but could use newspaper for example
- ⇒ Use a range of media to draw with—you can use traditional dry and wet art media, but should explore non traditional media too i.e. coffee
- ⇒ Vary techniques— scribble, dot, hatch, smudge, scrape, vary line weight
- ⇒ Subject matter— choose one subject to focus on: natural forms; the figure (including the portrait and anatomy); architecture

Materials you could work on: found papers, paper bags, postcards, old photos, cups, packaging, fabric, old clothes, shoes, boxes, glass jars bottles, plastic bags etc



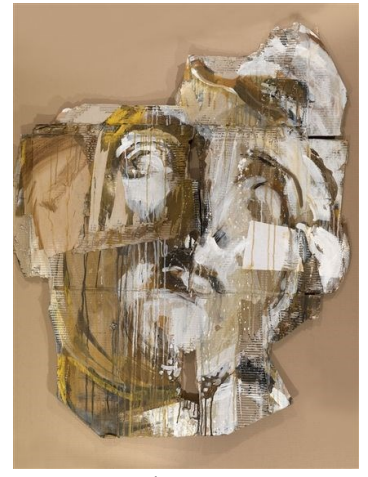
Paul Westcombe



Hew Locke



Alexandra Dillon



Francesca Woodman

Task 2: Photography

Take a series of photographs (minimum 5) exploring the figure in interior and exterior spaces around the home. You can use yourself as subject or work with a model. Use your creativity—explore and interact with the materials, spaces and objects you find; look for interesting reflections and shadows and materials that you could photograph through, such as patterned glass, bottles and curtains.



Francesca Woodman

