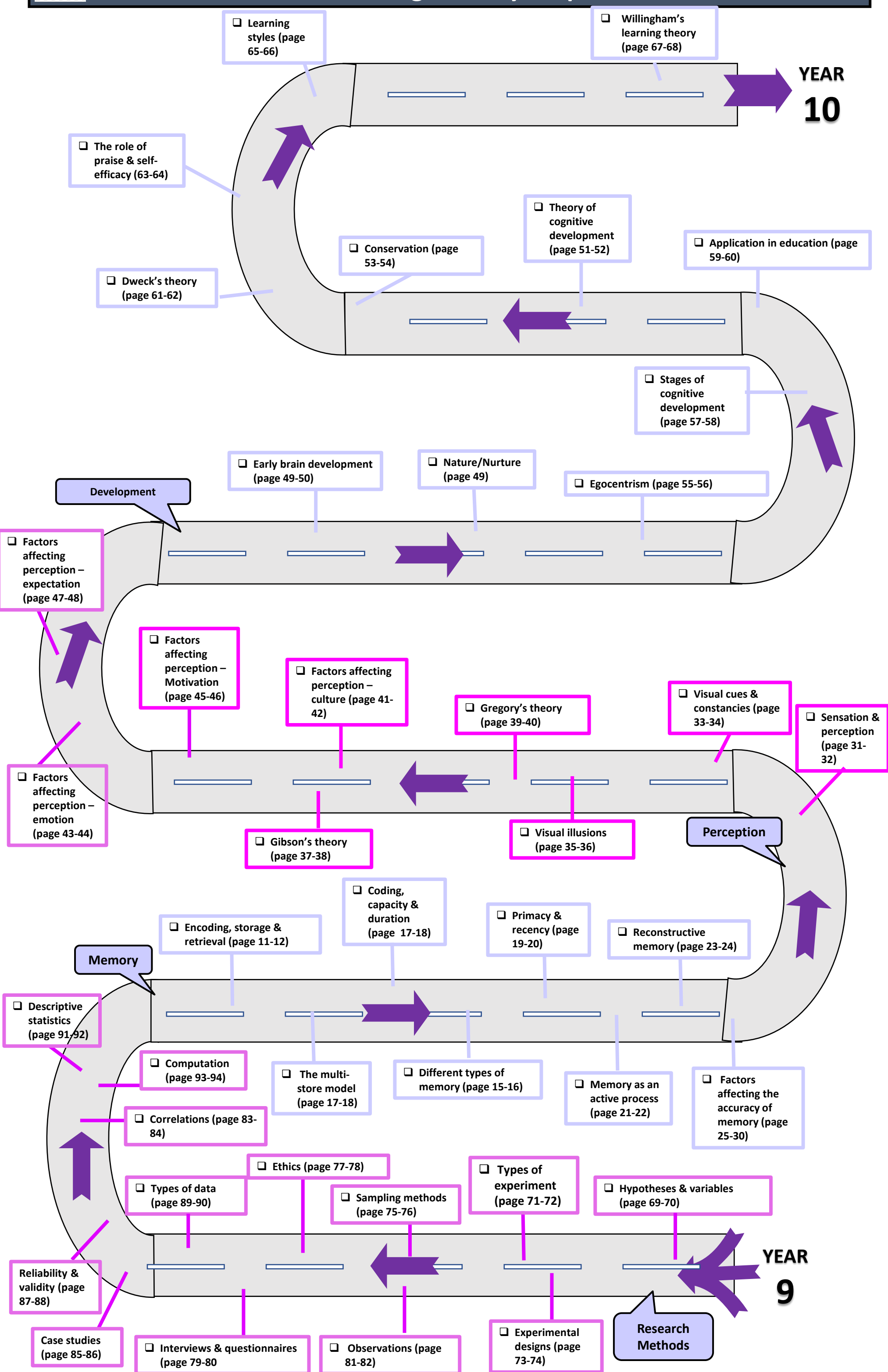




# Year 9 Psychology Learning Journey Map



### Maths Skills:

- Recognise and use expressions in standard form.
- Use ratios, fractions and percentages.
- Make estimates of the results of simple calculations.
- Calculate and interpret measures of central tendency/dispersion.
- Draw and interpret graphs (bar charts & histograms).
- Draw and interpret scatter graphs.
- Normal distribution graphs.

### Working Scientifically:

- Formulate hypotheses -Make predictions and develop explanations.
- Consider ethical issues.
- Recognise the importance of controlling extraneous variables.
- Recognise the importance of using standardised procedures.