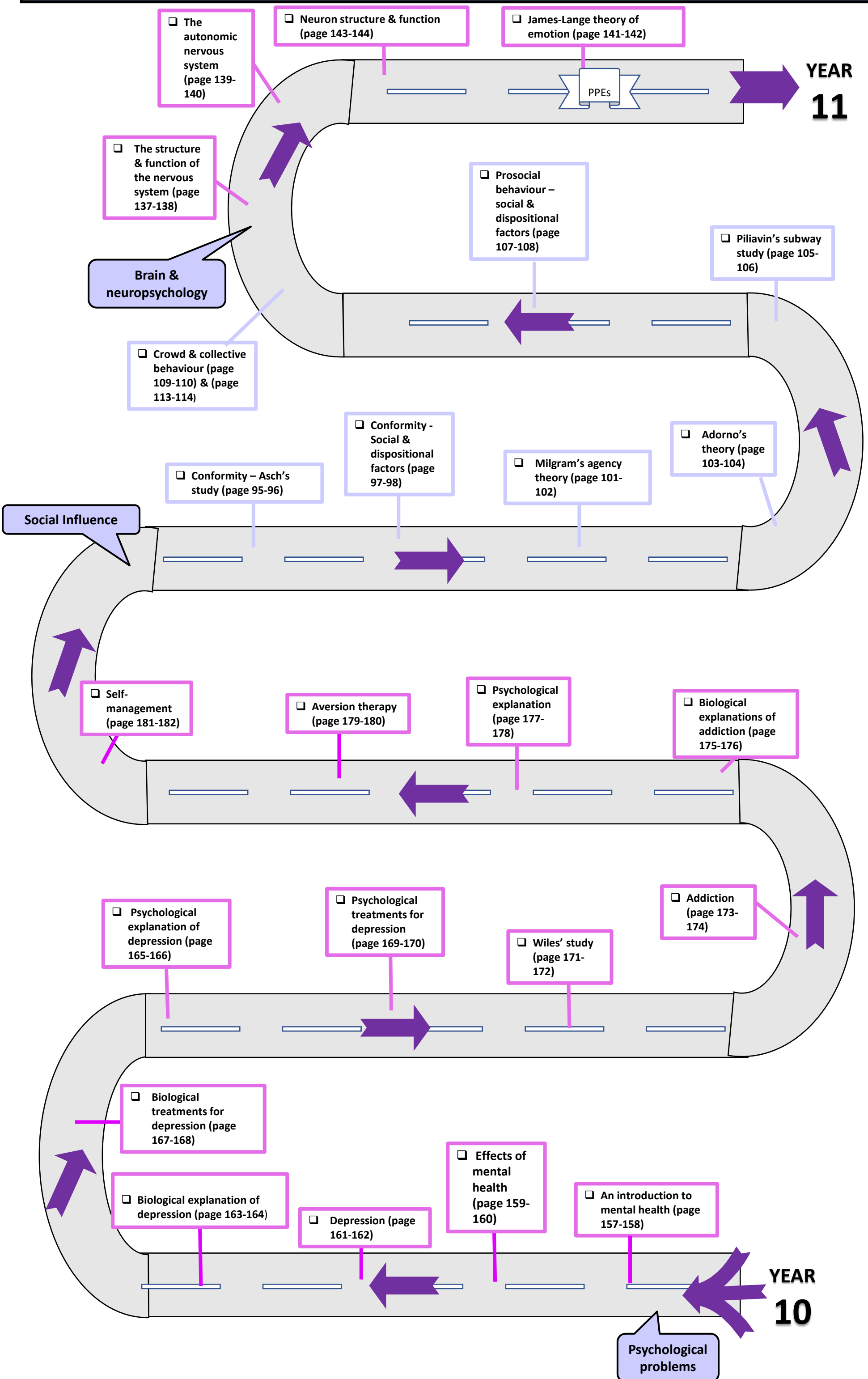




Year 10 Psychology Learning Journey Map



- Maths Skills:**
- Recognise and use expressions in standard form.
 - Use ratios, fractions and percentages.
 - Make estimates of the results of simple calculations.
 - Calculate and interpret measures of central tendency/dispersion.
 - Draw and interpret graphs (bar charts & histograms).
 - Draw and interpret scatter graphs.
 - Normal distribution graphs.

- Working Scientifically:**
- Formulate hypotheses -Make predictions and develop explanations.
 - Consider ethical issues.
 - Recognise the importance of controlling extraneous variables.
 - Recognise the importance of using standardised procedures.